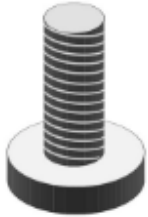


LMA226-209 Fitting Instructions

The LMA226-209 lightweight Rover K-Series race alternator has an additional pin for excitation and subsequently needs a switched 12V ignition feed to the IG pin.

Only early cars the original alternator has 2 x terminals:

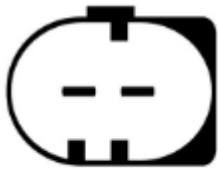
- M6 B+ stud (battery positive / charge cable) **essential**.
- M5 D+ stud (Lamp – switched ignition to 2W-5W bulb down to alternator) **essential**.



M5 D+

On later cars the original alternator has 3x terminals:

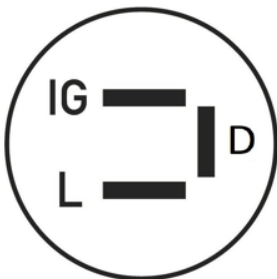
- M8 B+ Stud
- 2-Pin Plug



L DFM

The LMA226-209 has 3 x active pins:

- M6 B+ stud (battery positive / charge cable) **essential**.
- 'L' 6.5mm male lucar / spade terminal (Lamp – switched ignition to 2W-5W bulb down to alternator) **not essential**.
- 'IG' 6.5mm male lucar / spade terminal (Ignition – switched 12V ignition for excitation) **essential**.
- 'D' dummy / no function.



Looking at regulator
receptacle (Not plug on loom)

